

# Gen V WG60CG Powergate60

## Compressed Gas



The Gen-V WG60CG Powergate60 Compressed Gas external wastegate is a cost effective, high performing 60mm external wastegate designed for control strategies that actively bias the top chamber with high pressure for large boost bandwidth operation, such as CO2 drag racing, or compressed air WRC applications. The Compressed Gas range feature an inverted diaphragm to maximise diaphragm life from high pressure CO2 or compressed air systems. The Gen-V provides extensive user configurability, world leading extended thermal performance, fatigue resistance and best in class flow performance for optimum control and longevity.

- Liquid cooling provision
- Strap type V-band clamps
- User adjustable actuator position
- Modular actuator design
- Standard option available
- Inverted diaphragm for top chamber high pressure support

### Mechanical Data

Valve diameter	60mm (2.36in)
Mass	1522g (3.55lbs)
Actuator linearity	1.45% of full lift (BFSL)
Set pressure accuracy	+/- 0.5 psi of base pressure
Safe working pressure max.	220 psi / 1520 kPa / 15 bar
Safe inverted pressure max.	180 psi / 1250 kPa / 12.5 bar
Actuator life	500k cycles @ 180°C (356°F) ambient 650k cycles @ 80°C (176°F) ambient
Actuator/Valve ratio	1.6:1
Max. spring base pressure	26 psi / 180 kPa / 1.8 bar
Min. spring base pressure	3 psi / 21 kPa / 0.2 bar
Port fittings type	Air: 2x 1/8" NPT top chamber Air: 2x 1/8" NPT lower chamber Liquid Cooling: 2x 1/8" NPT

### Thermal Data

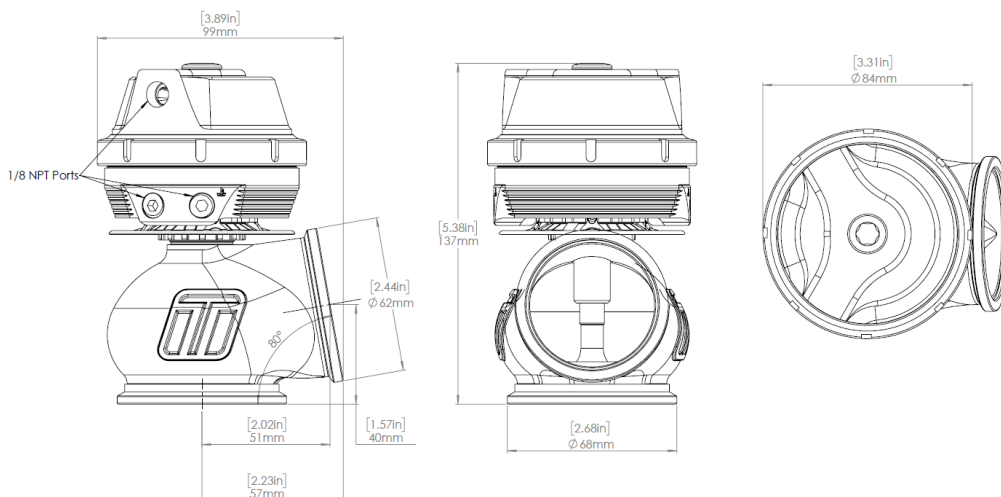
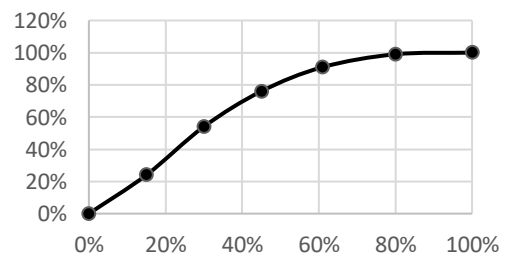
Max. thermal stress (non-cooled)*	>60min @ 1250°C (2282°F) EGT continuous
Max. thermal stress (h2O cooled)*	>24hr @ 1250°C (2282°F) EGT continuous
Max. ambient/compartments temp.	260°C / 500°F
Max. actuator temp.	310°C / 590°F

### Material Data

Beryllium (Be)	0%
Main Body	High temp 347 SS
Diaphragm	Proprietary Silicone w/ nomex
Actuator housing	6061 T6 anodised Al.
Valve Guide	Nitronic 60
Valve	EV8 w/ proprietary plating
V-Band	Heat treated 431 SS w/ 18-8 nut
Weld Flanges	304 Stainless Steel
Springs	17-7PH Stainless Steel

### Flow Data

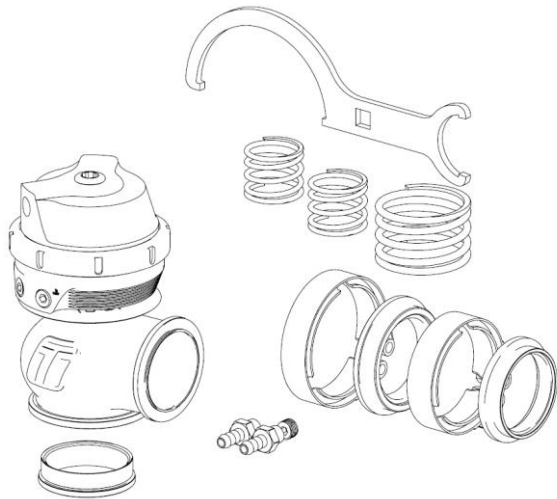
Max. Flow	360.9 CFM/10.22m <sup>3</sup> /min @1psidP
Flow Linearity	-12% of full lift (BFSL)



\*Continual source of minimum 1250°C exhaust gas, with no cool down periods for at least 30minutes and no external air cooling on actuator, this is a destructive test that an ICE engine cannot support. Contact tech support for further information.

### Included in the Box

- Wastegate unit (pre-assembled with spring as per order)
- SS316 Valve seat
- Inlet V-Band
- Inlet SS304 weld flange
- Outlet V-Band
- Outlet SS304 weld flange
- Collar tool (master/slave)
- 17-7PH 3, 5, 7, 14 psi spring kit (1x spring installed)
- 4x 1/8" NPT plugs (1x installed) / 2x 1/8" NPT nipples
- Sticker
- Instruction card



### Order Data

TS-0554-1242 GenV PowerGate60 CG/CO2 HP Full Range

### Accessories

- TS-0555-3001 WG60 Valve seat
- TS-0555-3002 WG60 Valve and Guide set
- TS-0555-3003 WG60 Inlet V-Band
- TS-0555-3004 WG60 Outlet V-Band
- TS-0503-3001 WG60 Stainless Inlet Weld Flange
- TS-0503-3002 WG60 Stainless Outlet Weld Flange
- TS-0503-3007 WG60 Alloy Inlet Weld Flange
- TS-0503-3008 WG60 Alloy Outlet Weld Flange
- TS-0550-3089 GenV Spring (3psi) Inner (Raw) Suit WG60
- TS-0550-3090 GenV Spring (5psi) Inner (Purple) Suit WG60
- TS-0550-3091 GenV Spring (7psi) Middle (White) Suit WG60
- TS-0550-3092 GenV Spring (14psi) Outer (Brown) Suit WG60
- TS-0550-3061 98mm CG Diaphragm Replacement Kit
- TS-0550-3015 98mm Actuator Collar Tool

*Refer to catalogue for further accessories*

### Install Req.

- Inlet Pipe Suits 63.5mm/2.50" OD
- Outlet Pipe Suits 63.5mm/2.50" OD
- Port Tube Min. ID 6mm / 0.236"

### Spring Data

Master Collar Size	Spring Pressure			
	3psi	5psi	7psi	14psi
98mm	Raw	Purple	White	Brown

Boost Pressure	Location	Inner	Inner	Middle	Outer
	Pressure	3psi	5psi	7psi	14psi
3psi		•			
5psi			•		
7psi				•	
10psi		•		•	
12psi			•	•	
14psi					•
17psi		•			•
19psi			•		•
21psi				•	•
24psi		•		•	•
26psi			•	•	•