

eBG50 Electronic BoostGate



The Turbosmart Electronic Straight Boost Gate is a new feature in the blow off valve line-up. The boost gate provides extensive user configurability, world leading extended thermal performance, fatigue resistance and uninterrupted flow performance for optimum control and longevity with its butterfly valve.

- Strap type V-band clamps
- User adjustable actuator position
- Full Electronic control
- Endless Boost Control Strategies

Mechanical Data

Flow Diameter	50mm (1.97in)
Mass	1816g
Safe working pressure max.	220 psig / 1520 kPa / 15 bar
Actuator life	550k cycles @ 150°C (302 °F) ambient 800k cycles @ 80°C (176 °F) ambient
Port fittings type	Liquid Cooling: 2x 1/8" NPT

Thermal Data

Max. ambient/compartament temp.	200°C / 392°F
Max. actuator temp.	150 °C / 257°F

Electrical Data

Sensor Operating voltage	5V±0.5V
Outputs	<ul style="list-style-type: none"> • Analog 0-5V • Pulse Width Modulated signal
Operating Temperature	-40 °C to 150 °C (-40 °F to 302 °F)
Sensor Supply Current	21mA
PWM Frequency Output	220-268 Hz

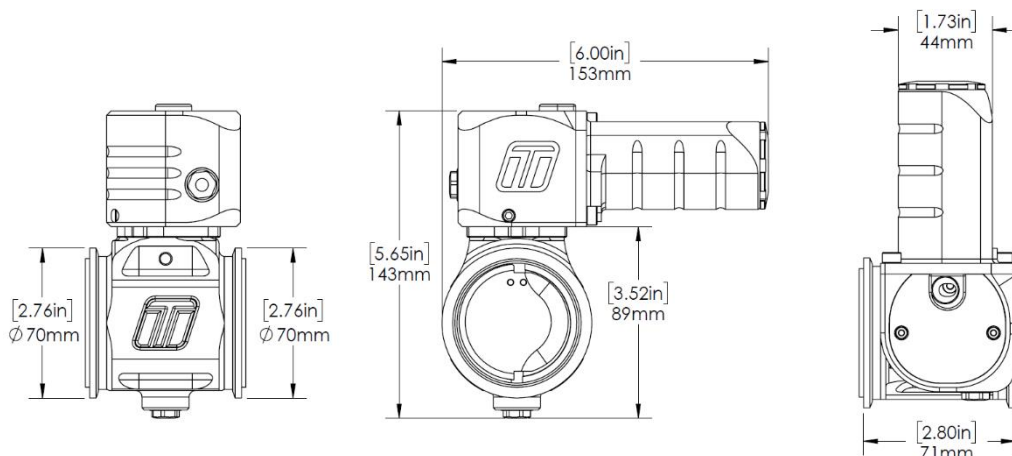
Position Sensor Data

Position	Target Voltage (V)	Duty Cycle
100%	0.20-0.60V	~16%
0%	4.40-4.80V	~84%

Connection Data

Red 22AWG	5V
Black 22AWG	0V
White 22AWG	Valve position
Blue 22AWG	*Unfiltered Signal (Position Output)
Yellow 22AWG	Sensor Temperature
Red 14AWG	Motor A (Positive Closed)
Black 14AWG	Motor B (Positive Open)

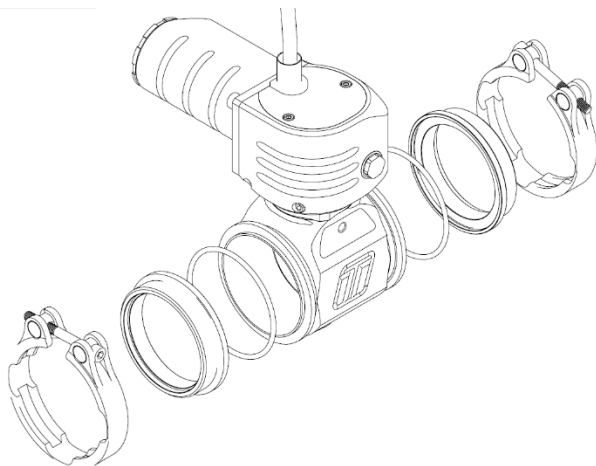
***Note: The Blue (unfiltered position signal) is not required for use & is for development purposes only.**



*Continual source of minimum 1250°C exhaust gas, with no cool down periods for at least 30minutes and no external air cooling on actuator, this is a destructive test that an ICE engine cannot support. Contact tech support for further information.

Included in the Box

Boostgate unit
Outlet V-Band
Inlet V-Band
Outlet Aluminium weld flange
Inlet Aluminium weld flange
Sticker
Instruction card



Order Data

TS-0265-1042 eBG50 Electronic BoostGate Black

Accessories

TS-0265-3001 BG50 BoostGate Trumpet
TS-0265-3002 BG50 BoostGate Aluminium Weld Flange
TS-0265-3003 BG50 Boost Gate Stainless Steel Weld Flange
TS-0265-3004 V-Band Clamp (Aluminium) suit Pro Port and PowerPort BOV
TS-0550-3124 eStraight Gate Replacement Motor
TS-0550-3123 eStraight Gate Replacement Sensor

Refer to catalogue for further accessories

Install Req.

Inlet Pipe Suits 57.5mm/2.25" OD
Outlet Pipe Suits 57.5mm/2.25" OD